



Counselors' Corner

February 2023

This month's character trait: Kindness

So, What is It?

Kindness is the quality of being friendly, generous, and compassionate.

Why is it Important?

It is important to be kind because it makes the world a better place. Being kind feels good to the recipient AND the giver. You never know what someone else might be going through, so be the person who makes their day a little bit brighter!

How can I Show Kindness?

- I can hold the door open for someone
- I can write a kind note to a friend or family member
- I can listen to and obey my adult(s)
- I can allow someone else to go first

- I can encourage a friend who might be having trouble doing something
- I can bake a dessert for a neighbor
- I can make a get-well card for someone who isn't feeling well
- I can donate clothing or toys that I've outgrown to a shelter
- I can help to cook dinner
- I can tell someone how much I love them
- I can listen to someone and show empathy if he/she is having a bad day
- I can help a younger sibling with their homework
- I can say three positive things about myself – yes, I can (and will) be kind to myself, too!

February at a Glance

Feb 20 – Presidents' Day
FLVS is closed, but courses remain open



Feb 24 – LIVE Guidance Lesson on Kindness – check your teachers' announcement page for details.

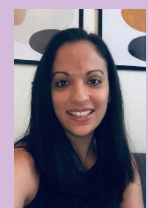
Transitioning back to Brick and Mortar School?

- If your child completed courses with us, please be sure to request an official transcript by following the prompts [here](#).
- If your child is transitioning in the middle of a segment, save his/her current grades by logging in to your parent account and clicking on the top left 3-bar menu, then Student Records, then Cumulative Academic Report. Next, save and print your child's grades. Once he/she has been withdrawn, you will lose access to the grades.
- Withdraw student from your district Home Ed Program by sending a Letter of Termination
- Update your child's account to reflect his/her physical school

We're here to help!



O: 407-513-3699
rpinkman@flvs.net
Serving counties
Alachua through
Hardee, alphabetically,
plus Hillsborough.



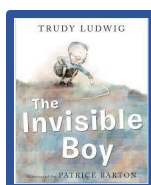
O: 407-513-3613
nminger@flvs.net
Serving counties
Hendry through
Orange, alphabetically,
except Hillsborough.



O: 407-513-3524
krohr@flvs.net
Serving counties
Osceola through
Washington,
alphabetically.



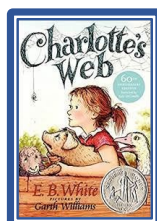
Check out these books!



The Invisible Boy

By: Trudy Ludwig

Be Kind
By: Pat Zietlow Miller



Charlotte's Web

By: EB White